



# THE OCEANS, SEAS AND MARINE RESOURCES FOR SUSTAINABLE DEVELOPMENT

**Kuala Lumpur commits to contribute towards life below water by ensuring its river system and water conveyor system are clean and well-managed**

## Kuala Lumpur Commitment to SDG 14

### POLICIES AND PLANNING FRAMEWORK

#### Kuala Lumpur 2040

Kuala Lumpur Spatial Management Plan has identified the River of Life as a key zone to:

- SV1.20** Integrate of sustainable urban drainage with ecological linkage in Kuala Lumpur.
- SV1.1C** Expand the river of life program to other rivers in Kuala Lumpur.

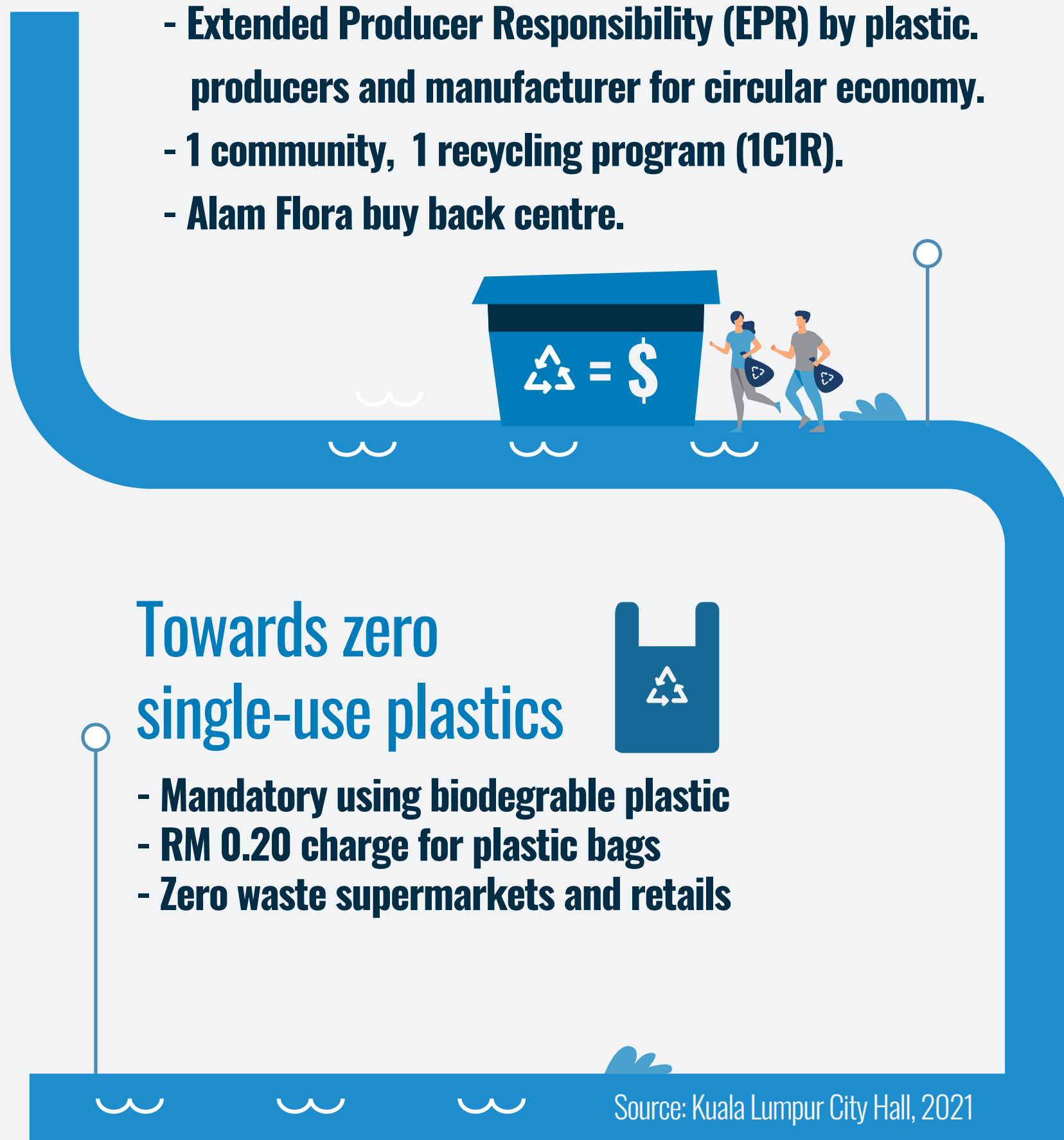
#### Kuala Lumpur Low Carbon Society Blueprint 2030

- CE1** Survey sustainable consumption practice
- CE2** Stimulate sustainable consumption practice
- CE3** Strengthen sustainable consumption practice
- CE4** Sustain sustainable consumption practice

### TARGETS

#### Diversion from landfill programs

- Separation at source program.
- Extended Producer Responsibility (EPR) by plastic producers and manufacturer for circular economy.
- 1 community, 1 recycling program (1C1R).
- Alam Flora buy back centre.



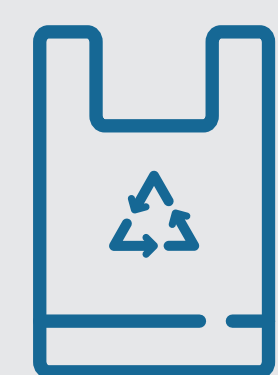
Source: Kuala Lumpur City Hall, 2021

### TARGETS



#### Class IIB (76.5 - 92.7 WQI) for Kuala Lumpur river water quality

- Characteristic:
- Water supply II – conventional treatment
  - Fishery II – sensitive aquatic species
  - Recreational use body contact



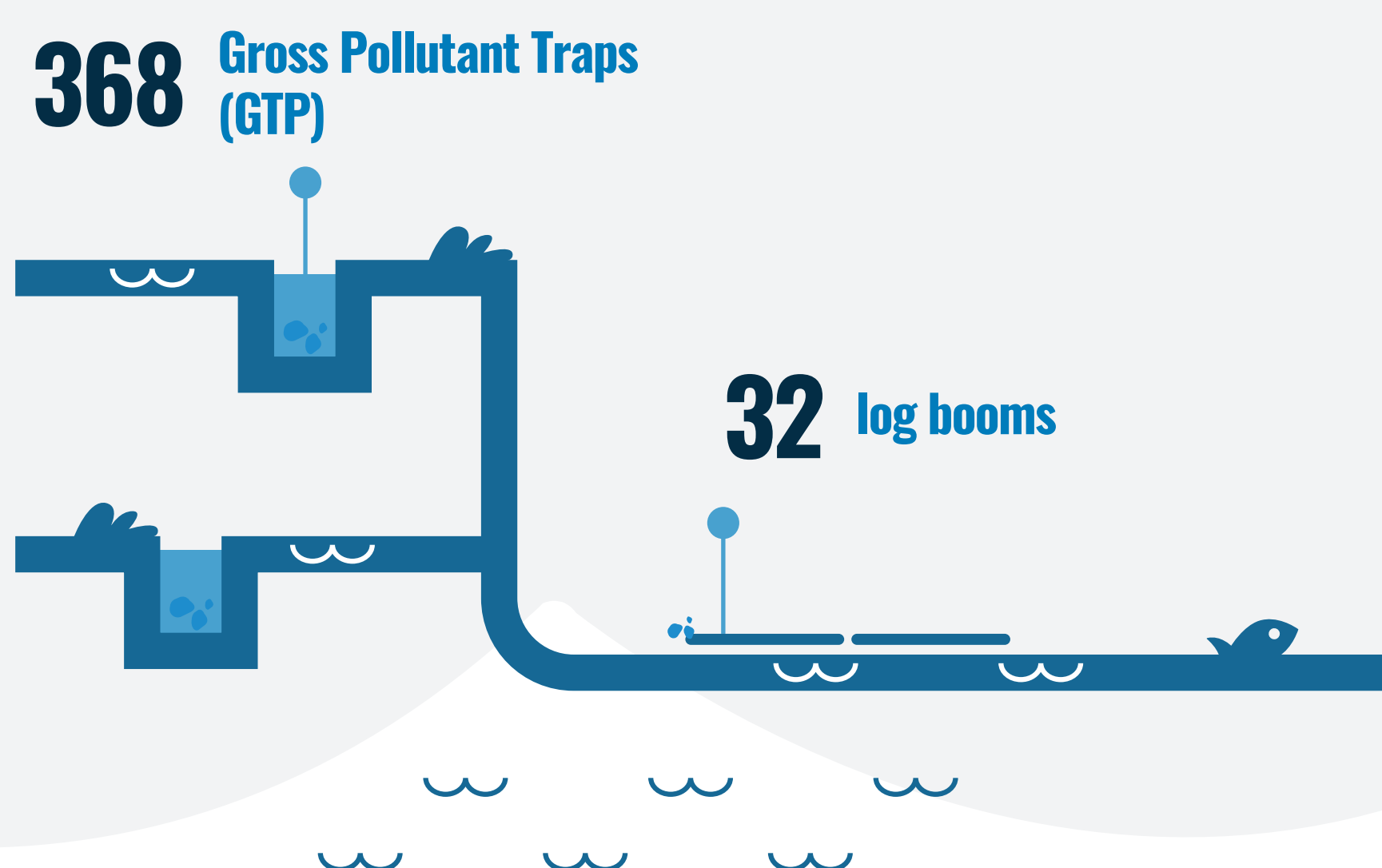
#### ZERO Single-use plastic by 2030

Source: Malaysia's Roadmap towards Zero Single-use Plastics 2018-2030

## Kuala Lumpur Progress to SDG 14

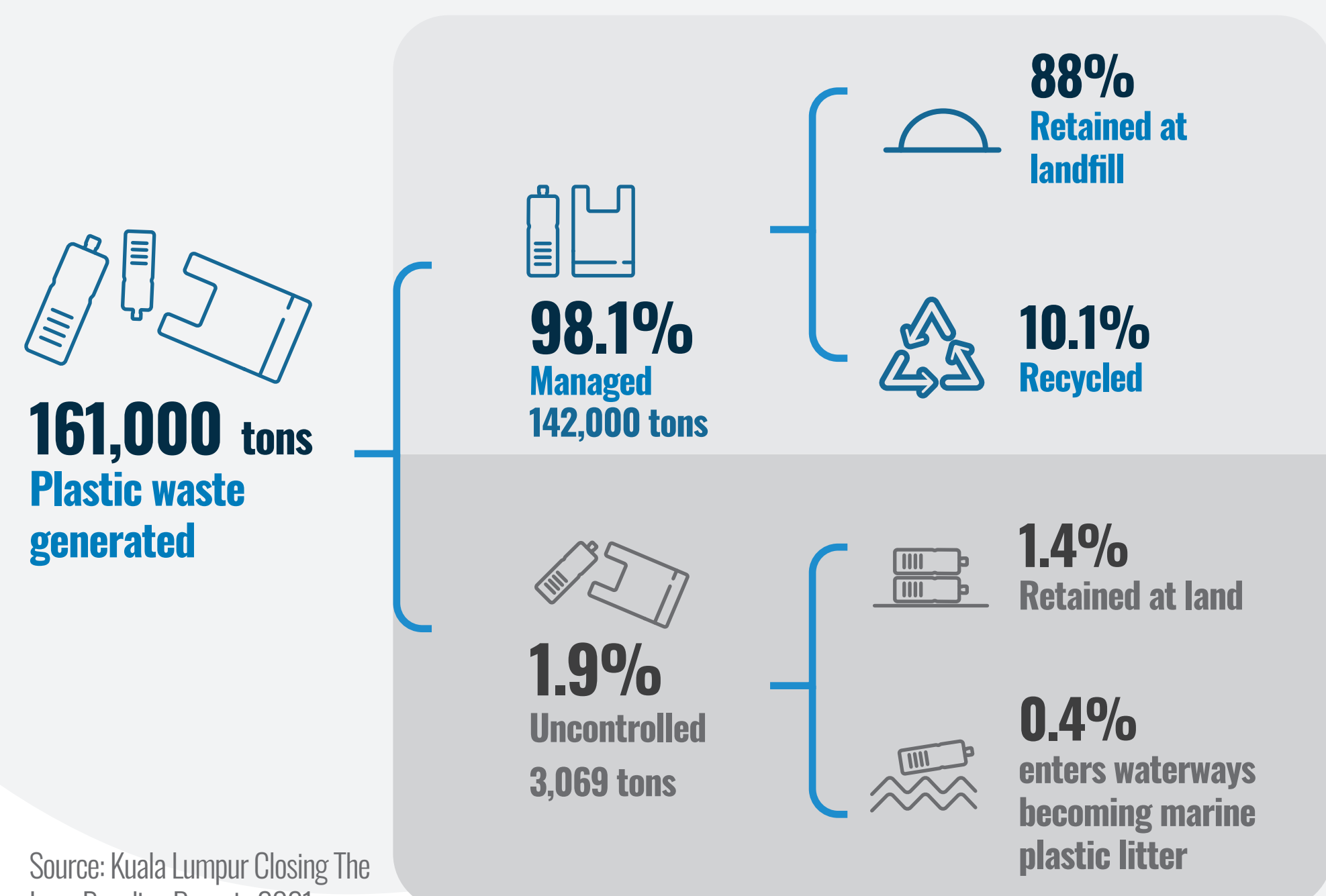
### 1 River of Life (2016-2020) and infrastructure to protect marine environment.

RoL cleans and beautify a total of 110 km of waterways encompassing 2 main rivers (Klang River and Gombak River) and 6 tributaries to potential reduce plastic wastes and other solid waste as marine litter. A total of **368 Gross Pollutant Traps (GTP)** installed in major waterway--362 installed by Department of Drainage (DID) and 6 by KLCH--and **32 log booms** installed, 18 log booms by DID and one by KLCH, have been set up in various drainage sites across the rivers.



### 2 Plastic waste flow in Kuala Lumpur waterways

Kuala Lumpur generated 161,000 tons of plastic waste a year and 88% ends up at the disposal site where it is retained (142,000 tons), 10.1% of the plastic is sorted for recycling (16,300 tons), and 1.9% of the plastic waste generated is deemed to be uncontrolled in the environment (3,069 tons) and **653 tons (0.4%) enters waterways becoming marine plastic litter.**



Source: Kuala Lumpur Closing The Loop Baseline Report, 2021