

**11 SUSTAINABLE CITIES AND COMMUNITIES**



# Make Cities Inclusive, Safe, Resilient and Sustainable

Access to basic services • Affordable housing  
Public transportation • Public space

Kuala Lumpur has continuously improve its planning and management to create a **livable city** where **business opportunities, safe and affordable housing, transportation and public spaces builds resilient society and economy**

## Kuala Lumpur Commitment to SDG 11



### TARGET 11.1: SAFE AND AFFORDABLE HOUSING

By 2030, ensure access for all to adequate, safe and affordable housing and basic services and upgrade slums

### Kuala Lumpur 2040

IS1.1

Manage the development of housing – providing choice for its population

IS1.2

Provision of quality conducive and accessible affordable housing by taking into consideration residents' different financial and physical capabilities

IS1.4

Intensify the regeneration and improvement activities of old established housing areas to meet the changes of resident profiles

### Kuala Lumpur Low Carbon Society Blueprint

2.1.2

Concentrate provision of new affordable homes around transit stations

### Kuala Lumpur Competitive City Master Plan

P4R5

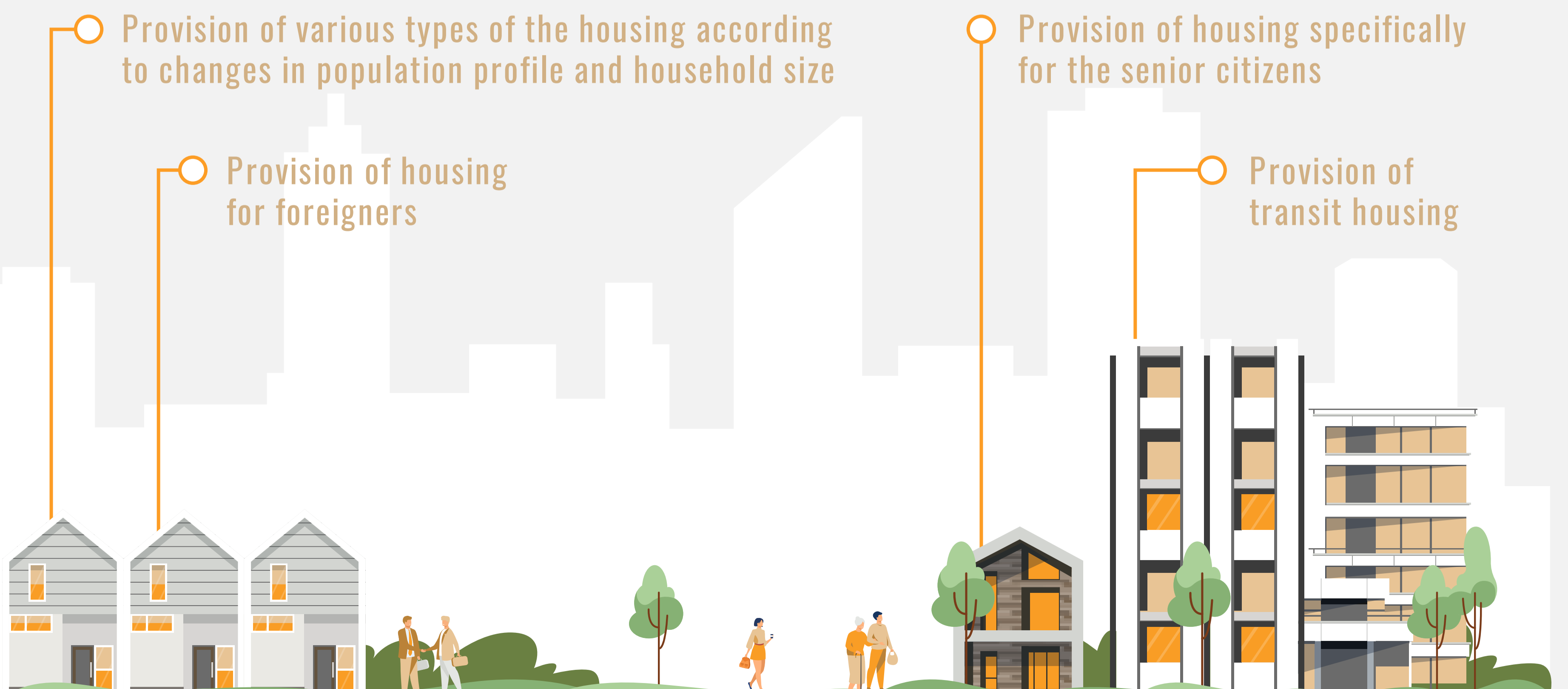
Kuala Lumpur public housing board, KL transit home scheme, transit homes for companies with immigrant workers

Provision of various types of the housing according to changes in population profile and household size

Provision of housing for foreigners

Provision of housing specifically for the senior citizens

Provision of transit housing



**11** SUSTAINABLE CITIES AND COMMUNITIES

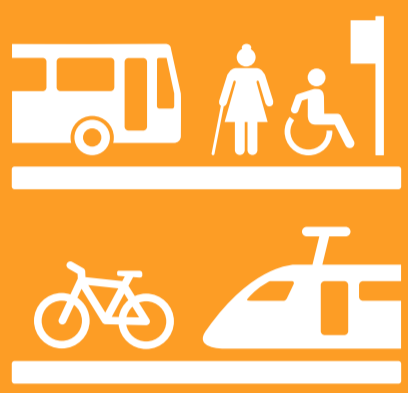


# Make Cities Inclusive, Safe, Resilient and Sustainable

Access to basic services • Affordable housing  
Public transportation • Public space

Kuala Lumpur has continuously improve its planning and management to create a **livable city** where **business opportunities, safe and affordable housing, transportation and public spaces builds resilient society and economy**

## Kuala Lumpur Commitment to SDG 11



### TARGET 11.2: AFFORDABLE AND SUSTAINABLE TRANSPORT SYSTEMS

By 2030, provide safe, affordable and sustainable transportation system for all

## Kuala Lumpur 2040

MC1.1

Expand the public railway network and enhance its supporting infrastructure

MC1.2

Develop urban commuter systems in Kuala Lumpur City Centre through transit development within and intra-city

MC1.3

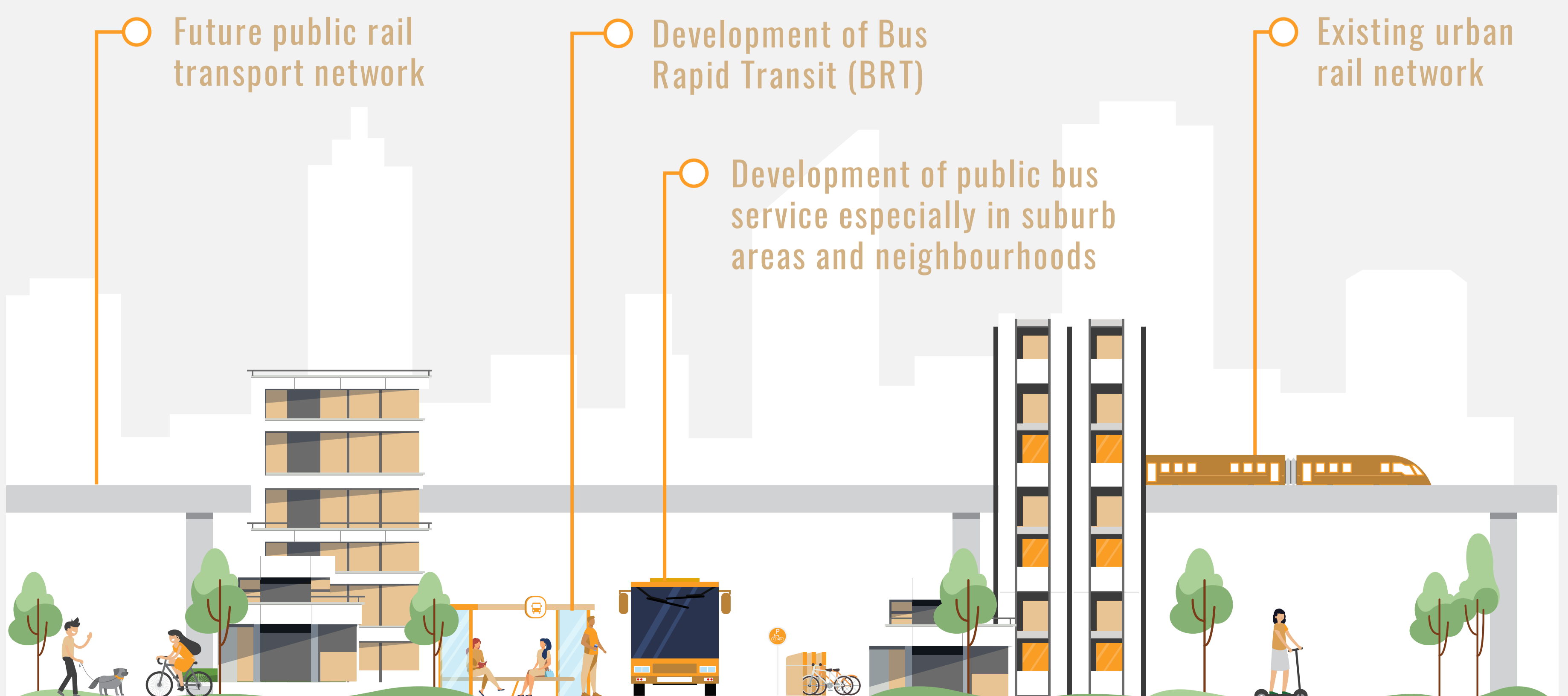
Prioritise the development of public buses connectivity as the first choice of public transport mode

MC2.2

Provide micro-mobility infrastructures such as micro-mobility facilities and dedicated micro-mobility lanes in selected areas to enhance the city's accessibility

MC3.3B

Enable road sharing between priority busses, BRTs, city commuters, pedestrian and micro-mobility vehicles at selected routes in the city



**11** SUSTAINABLE CITIES AND COMMUNITIES



# Make Cities Inclusive, Safe, Resilient and Sustainable

Access to basic services • Affordable housing  
Public transportation • Public space

Kuala Lumpur has continuously improve its planning and management to create a **livable city** where **business opportunities, safe and affordable housing, transportation and public spaces builds resilient society and economy**

## Kuala Lumpur Commitment to SDG 11



### TARGET 11.2: AFFORDABLE AND SUSTAINABLE TRANSPORT SYSTEMS

By 2030, provide safe, affordable and sustainable transportation system for all

## Kuala Lumpur Low Carbon Society Blueprint

2.1.1

Create a human-oriented environmentally friendly urban design focusing on walkable and cyclist-friendly urban districts

3.2.2

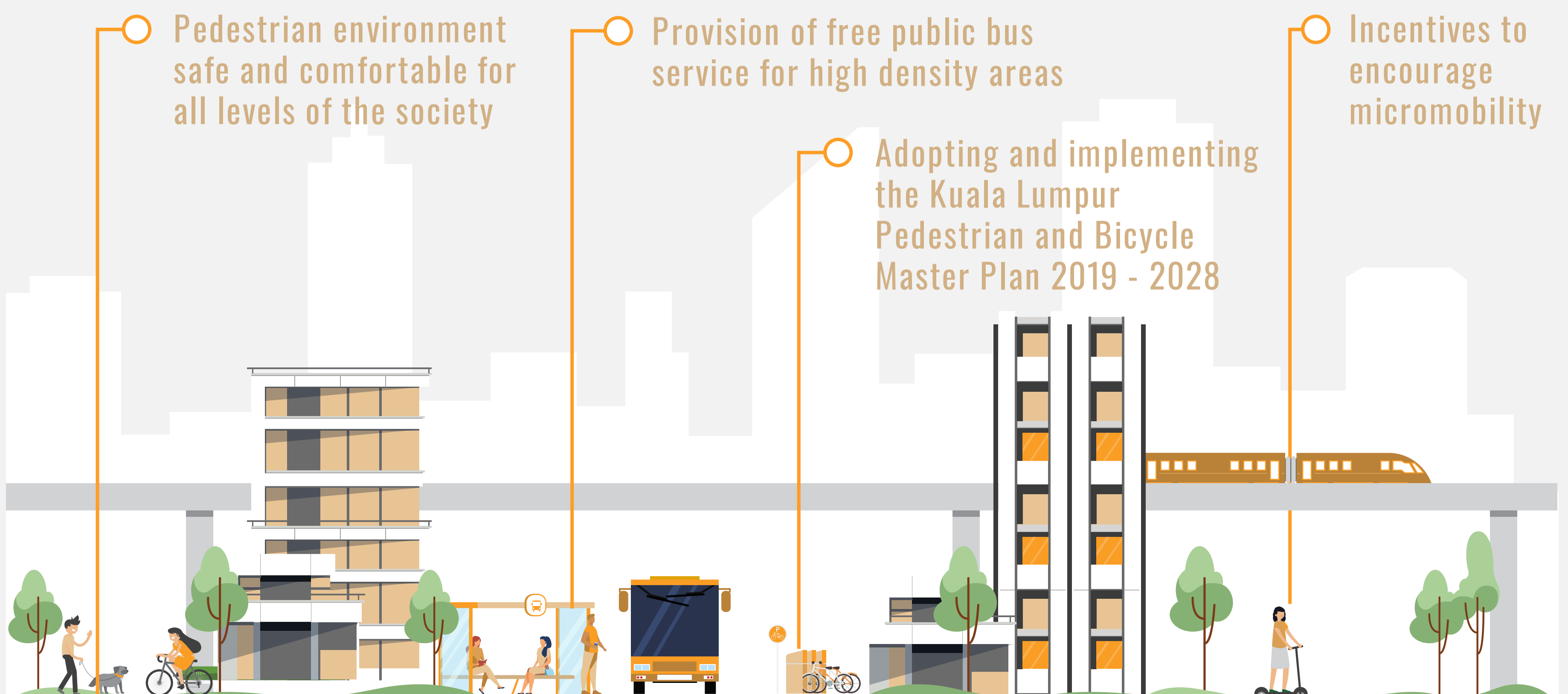
Ensure seamless intermodal transfer (interchange facilities) by upgrading bus and rail integrated terminals and enhance park and ride facilities in sub-urban transit nodes

3.2.1

Improve public transport system by expanding route network, re-rationalise existing bus lane network and advocate for higher capacity, fast, frequent and reliable rapid transits

3.3.1

Promote the use of green vehicles



**11** SUSTAINABLE CITIES AND COMMUNITIES



# Make Cities Inclusive, Safe, Resilient and Sustainable

Access to basic services • Affordable housing  
Public transportation • Public space

Kuala Lumpur has continuously improve its planning and management to create a **livable city** where **business opportunities, safe and affordable housing, transportation and public spaces** builds resilient society and economy

## Kuala Lumpur Commitment to SDG 11



### TARGET 11.7: PROVIDE ACCESS TO SAFE AND INCLUSIVE GREEN AND PUBLIC SPACES

By 2030, provide universal access to safe, inclusive and accessible, green and public spaces, in particular for women and children, older persons and persons with disabilities.

### Kuala Lumpur 2040

SV2.1

Improving Quality and Diversifying Functions of Parks and Open Spaces for All

SV4.1

Establishing a Public Trust Fund for Parks and Green Areas

SV4.2

Encouraging Public-Private Partnerships in Green Area Management

SV4.3

Providing Urban Design Guidelines

### Kuala Lumpur Tourism Master Plan

1.2

Develop and diversify heritage trails and products by leveraging on heritage areas and public spaces in the city

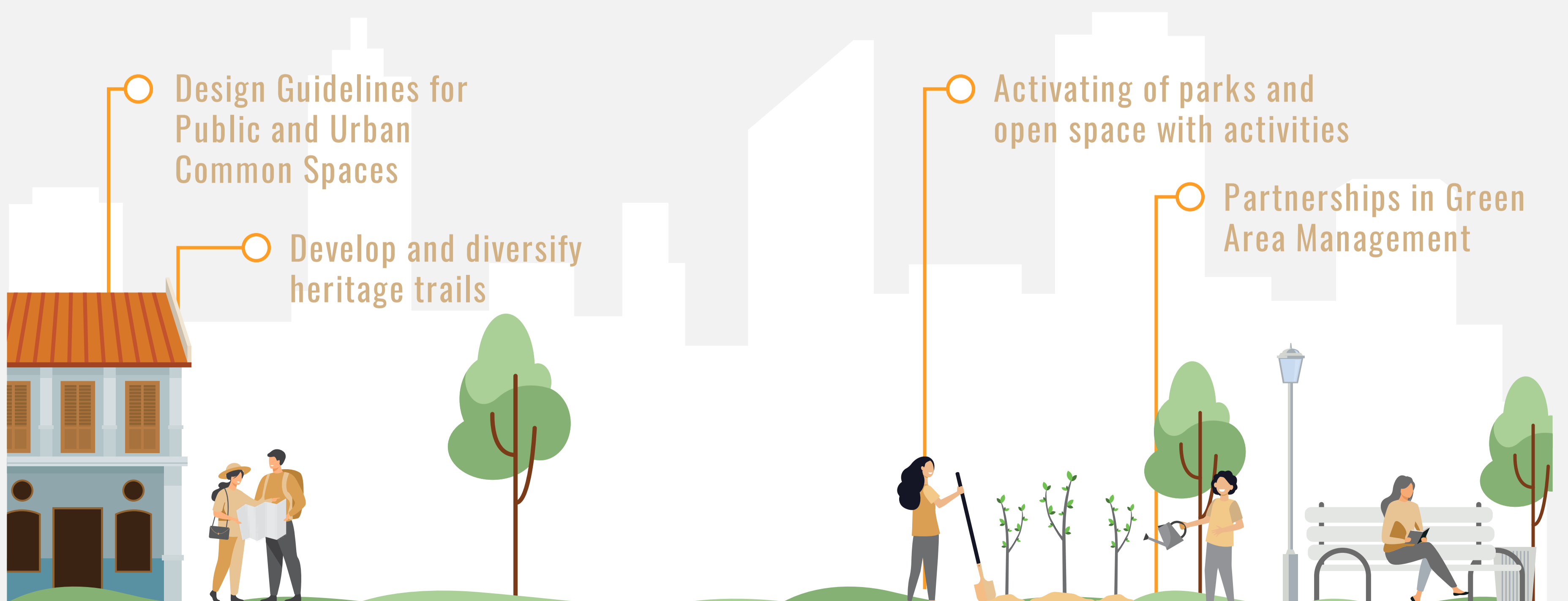
1.4

Develop vibrant cultural events and art scene by utilising existing public spaces for arts and culture activities

### Kuala Lumpur Competitive City Master Plan

P4R4

Develop a study on provision of green open spaces for high rise developments





# Make Cities Inclusive, Safe, Resilient and Sustainable

Access to basic services • Affordable housing  
Public transportation • Public space

Kuala Lumpur has continuously improve its planning and management to create a **livable city** where **business opportunities, safe and affordable housing, transportation and public spaces builds resilient society and economy**

## Kuala Lumpur Commitment to SDG 11

### Kuala Lumpur target by 2040

By 2040

100%

Provision of affordable homes of varied types and choices

Provision of public amenities within 1-5km of neighbourhood

By 2025 | 40,000 affordable housing  
20,000 targeted homes by 2025  
2 redevelopment areas by 2025

By 2030 | 3 areas for Urban Housing Development by 2030  
2 areas for Council Home Program by 2030

By 2040

>300m

Pedestrian walkways and bicycle tracks

20m<sup>2</sup>

>200m

Park connectors in Kuala Lumpur

Ratio of parks and open space to Kuala Lumpur population

By 2025 | First mile and last mile facilities at 75% of CBD transit stations by 2025

By 2030 | 60:40 modal split by 2030

By 2040 | 70:30 modal split by 2040  
400 meter coverage of transit line by 2040